



ACCURATE  
MANUFACTURED  
PRODUCTS  
GROUP

# Machine Tool & Workholding Accessories



CAT.Ver.02

Visit us online at [ampg.com](http://ampg.com) or email [sales@ampg.com](mailto:sales@ampg.com)

8090 Woodland Drive  
Indianapolis, IN 46278

p: 317.472.9000  
f: 317.472.9010

# “Beautiful Parts, Right Now”



## Longevity

AMPG is a privately-owned family business started by current management in 1987. With the second generation in the business, already for many years, we are realizing a future of serving our customers, collaborating with our employees, and contributing to a vibrant domestic manufacturing economy.

## Philosophy

We are proud to be an American manufacturer dedicated to solving large problems that affect small numbers of customers. We are committed to our team, our products, and our customers.

Our continuous capital investments in production equipment, employees, automation, and inspection technologies allows us to design thousands of new items a year, get them into large distributor channels and produce on demand small quantities in a few days.

## Stock & Custom...**FAST**

As a precision manufacturer of specialized fasteners, architectural hardware, mechanical components and industrial accessories, AMPG stocks over 35,000 products. We also offer custom manufacturing supported by design, product testing and engineering services. To see the latest and most complete catalog of our over 35,000 different items, visit [www.ampg.com](http://www.ampg.com).

## How to Buy Our Products

Visit us [online](#), email us at [sales@ampg.com](mailto:sales@ampg.com) or give us a call at **317.472.9000** and we can help you with your inquiry. Our stock line of parts ships same day from Indianapolis, Indiana.







## We Make Beautiful Parts, Right Now

AMPG (Accurate Manufactured Products Group) is a privately owned family business started by current management in 1987. Our 2nd generation is well experienced and active in the business and dedicated to keeping AMPG a closely held family firm.

## We are Proud to be an American Manufacturer

AMPG is a Make to Stock Manufacturer of over 50,000 unique items. New products are our lifeblood, and we have a long term strategic plan in place to introduce thousands of new products each and every year.

Our 147,000 Sq Ft facility in Indianapolis supports low to medium volume manufacturing runs with over 70 late model and brand new CNC Lathes, Mills, and Thread Rolling equipment. AMPG has an aggressive investment program in the latest and most advanced Production, Automation, and Inspection equipment, as well as software and engineering systems to run our business as efficiently as possible.

ISO Certification to 9001:2015 was attained to anchor the culture of continual improvement both on and off the production floor. ISO 17065 Product Certification will be applied for in 2023, and ISO 17025 will be used to certify our in house Lab also in 2023. The latest in measuring, testing, and monitoring equipment is used to insure product quality and fast lead times. Lean principles guide the manufacturing process using robots, vision systems, and machine monitoring to enable continuous unmanned production around the clock.

## Family Owned, Family Operated

AMPG began in Plainview, NY in 1987, and moved to Indianapolis, Indiana in 2004 in order to find the skilled machinists that are the foundation of our success. We are especially proud of our employee retention (as of 2022 all of our core team members will have over 15 years with the company), and the families second generation has over 18 years experience. We have a unique training method that allows us to grow our manufacturing capabilities to match our product and sales plan.

Our dedication to our employees is evidenced by their longevity and the numerous safety and healthiest employer awards we have won over the years.

## Product Quality, Appearance and Quick Deliveries are Foundational Goals

AMPG makes and stocks hard-to-find fasteners, components, and fittings. We ship same day from our Indianapolis facility. We offer custom manufacturing capabilities including design, product testing, and engineering services. Our Made-to-Order program produces as little as one part within 7 days.

## A Simple Philosophy

Provide a great customer experience by having beautiful, precise, and hard to find products ready to ship today.



ACCURATE  
MANUFACTURED  
PRODUCTS  
GROUP

## Page

## Description

<a href="#">i</a>	About AMPG
<a href="#">G-1 to G-5</a>	QUICK OUTS™ Socket-Screw Extractors, Inch and Metric
<a href="#">G6 to G-9</a>	Threaded Hole Transfer Punches, Inch and Metric
<a href="#">G-10</a>	Drawbars for Milling Machines, Inch
<a href="#">G-10</a>	The Universal Drawbar, Inch
<a href="#">G-11</a>	Drawbars for Milling Machines w/Right Angle Attachments, Inch
<a href="#">G-11</a>	Quill Feed Handles, Inch
<a href="#">G-11</a>	Spider Handle, Inch
<a href="#">G-12</a>	Precision Adjustable Mill Stop, Inch
<a href="#">G-12</a>	Quill Stop, Inch
<a href="#">G-12</a>	Shell End Mill Arbor Screws, Inch
<a href="#">G-13</a>	Milling Machine Arbor Spacers, Inch
<a href="#">G-13</a>	5C Fixture Mounts, Inch
<a href="#">G-14</a>	5C Mount Precision Chucks, Inch
<a href="#">G-14</a>	5C Adapter Body, Inch
<a href="#">G-14</a>	Soft Collet Heads, Inch
<a href="#">G-15</a>	Internal Expanding Collet Heads, Inch
<a href="#">G-15</a>	Adjustable Collet Stop, Inch
<a href="#">G-15</a>	Universal 5C Collet Stop, Inch
<a href="#">G-15</a>	5C Extra Length Collet Stop, Inch
<a href="#">G-16</a>	5C “Finger” Collet Stop, Inch
<a href="#">G-16</a>	Reducer Bushing for Air Die Grinders, Inch
<a href="#">G-16</a>	Slitting Saw Arbors, Inch
<a href="#">G-16</a>	3 Pc. Slitting Saw Arbor Set, Inch
<a href="#">G-17</a>	8 Piece Expanding Arbor Set, Inch
<a href="#">G-17</a>	3 Pc. Expanding Arbor Set, Inch
<a href="#">G-17</a>	Individual Expanding Arbors, Inch
<a href="#">G-18</a>	Vise Speed Handles, Inch
<a href="#">G-18</a>	Aluminum Soft Jaws for Vises, Inch
<a href="#">G-18</a>	Hand E-Key Chuck Keys, Inch
<a href="#">G-19</a>	Work Stop for Milling Machine Vises, Inch
<a href="#">G-19</a>	E-Z Vise Stop, Inch
<a href="#">G-19</a>	Mini Vise Stop, Inch
<a href="#">G-19</a>	Mini Stop, Inch
<a href="#">G-19</a>	Arbor Press Work Stop, Inch
<a href="#">G-20</a>	Lathe Mandrels, Inch
<a href="#">G-21</a>	Handle and Extension Rod Kits for Threaded-Shank Tube Brushes, Inch

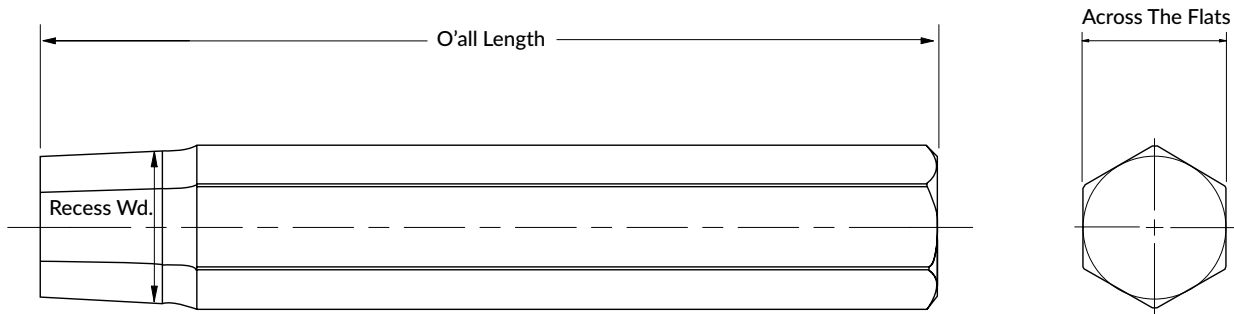
**QUICK OUTS™ Socket-Screw Extractors – Inch & Metric**  
Steel, Black Oxide



**Product Information**

QUICK OUTS™ are USA made socket-screw extractors that don't need a drill. Extract socket drive screws that have damaged round recesses without drilling. Just tap them into the stripped drive for socket head, socket button head, socket flat head and socket set screws, or any fastener with a hex socket drive. To remove, turn extractors with a wrench. Heat-Treated Steel. Sold individually or in sets. Sets sold with multi-compartment plastic case.

- AMPG products are made in the USA, precision machined from DFARS compliant material, and lot traceable.
- Alloy Steel material meets ASTM A108.
- Socket screw extractors are hardened for durability and have a black-oxide finish. Offers mild rust resistance.
- Extractors for right-hand and left-hand threaded screws.



Socket-Head Cap Screw Extractor

Button-Head Socket Cap Screw Extractors



Flat-Head Socket Cap Screw Extractors

Socket Set Screw Extractors



Extractor Sets

## QUICK OUTS™ Socket-Screw Extractors – Inch & Metric

Steel, Black Oxide



### Socket-Head Cap Screws Extractors, Inch

For Screw Size	Recess Wd.	Across the Flats	O'all Length	Engraved Size	Steel Black Ox Part Number
No. 6	7/64	5/16	2-1/4	SKT6	ZEXTC-6
No. 8	9/64	5/16	2-1/4	SKT8	ZEXTC-8
No. 10	5/32	5/16	2-1/4	SKT10	ZEXTC-10
1/4	3/16	5/16	2-1/4	SKT14	ZEXTC-14
5/16	1/4	5/16	2-3/4	SKT51	ZEXTC-51
3/8	5/16	3/8	3	SKT38	ZEXTC-38
7/16	3/8	7/16	3-1/4	SKT71	ZEXTC-71
1/2	3/8	7/16	3-1/2	SKT12	ZEXTC-12
5/8	1/2	9/16	3-5/8	SKT58	ZEXTC-58
3/4	5/8	3/4	3-5/8	SKT34	ZEXTC-34
7/8	3/4	7/8	3-5/8	SKT78	ZEXTC-78
1	3/4	7/8	3-5/8	SKT01	ZEXTC-01

### Socket-Head Cap Screws Extractors, Metric

For Screw Size	Recess Wd.	Across the Flats	O'all Length	Engraved Size	Steel Black Ox Part Number
M3	2.5mm	8mm	2-1/4	SKTM3	ZEXTC-M3
M4	3mm	8mm	2-1/4	SKTM4	ZEXTC-M4
M5	4mm	8mm	2-1/4	SKTM5	ZEXTC-M5
M6	5mm	8mm	2-1/4	SKTM6	ZEXTC-M6
M8	6mm	8mm	2-3/4	SKTM8	ZEXTC-M8
M10	8mm	9mm	3	SKTM10	ZEXTC-M10
M12	10mm	12mm	3-1/4	SKTM12	ZEXTC-M12
M14	12mm	14mm	3-1/2	SKTM14	ZEXTC-M14
M16	14mm	16mm	3-5/8	SKTM16	ZEXTC-M16
M18	14mm	16mm	3-5/8	SKTM18	ZEXTC-M18
M20	17mm	19mm	3-5/8	SKTM20	ZEXTC-M20
M24	19mm	21mm	3-5/8	SKTM24	ZEXTC-M24



### Socket-Head Cap Screws Extractors Sets

Set contains following extractors	No. of Extractors included	Steel Black Ox Part Number
No. 6, No. 8, No. 10, 1/4	4	ZEXTC-SET6-14
1/4, 5/16, 3/8, 7/16, 1/2	5	ZEXTC-SET14-12
5/8, 3/4	2	ZEXTC-SET58-34
7/8, 1	2	ZEXTC-SET78-01
M3, M4, M5, M6	4	ZEXTC-SETM3-M6
M6, M8, M10, M12, M14	5	ZEXTC-SETM6-M14
M16, M18, M20, M24	4	ZEXTC-SETM16-M24

Steel

## QUICK OUTS™ Socket-Screw Extractors – Inch & Metric

Steel, Black Oxide



### Button-Head Extractors, Inch

For Screw Size	Recess Wd.	Across the Flats	O'all Length	Engraved Size	Steel Black Ox Part Number
No. 6	5/64	5/16	2-1/4	BTN6	ZEXTB-6
No. 8	3/32	5/16	2-1/4	BTN8	ZEXTB-8
No. 10	1/8	5/16	2-1/4	BTN10	ZEXTB-10
1/4	5/32	5/16	2-1/4	BTN14	ZEXTB-14
5/16	3/16	5/16	2-3/4	BTN51	ZEXTB-51
3/8	7/32	5/16	3	BTN38	ZEXTB-38
7/16	1/4	5/16	3	BTN71	ZEXTB-71
1/2	5/16	3/8	3	BTN12	ZEXTB-12
5/8	3/8	7/16	3-1/4	BTN58	ZEXTB-58

### Button-Head Extractors, Metric

For Screw Size	Recess Wd.	Across the Flats	O'all Length	Engraved Size	Steel Black Ox Part Number
M3	2mm	8mm	2-1/4	BTNM3	ZEXTB-M3
M4	2.5mm	8mm	2-1/4	BTNM4	ZEXTB-M4
M5	3mm	8mm	2-1/4	BTNM5	ZEXTB-M5
M6	4mm	8mm	2-1/4	BTNM6	ZEXTB-M6
M8	5mm	8mm	2-3/4	BTNM8	ZEXTB-M8
M10	6mm	8mm	3	BTNM10	ZEXTB-M10
M12	8mm	9mm	3-1/4	BTNM12	ZEXTB-M12



### Button-Head Extractors Sets

Extractors for Screw Sizes	No. of Extractors included	Steel Black Ox Part Number
No. 6, No. 8, No. 10, 1/4	4	ZEXTB-SET6-14
1/4, 5/16, 3/8, 7/16, 1/2	5	ZEXTB-SET14-12
1/4, 5/16, 3/8, 1/2, 5/8	5	ZEXTB-SET14-58
M3, M4, M5, M6	4	ZEXTB-SETM3-M6
M6, M8, M10, M12	4	ZEXTB-SETM6-M12

## QUICK OUTS™ Socket-Screw Extractors – Inch & Metric

Steel, Black Oxide



### Flat-Head Socket Screw Extractors, Inch

For Screw Size	Recess Wd.	Across the Flats	O'all Length	Engraved Size	Steel Black Ox Part Number
No. 6	5/64	5/16	2-1/4	FLH6	ZEXTF-6
No. 8	3/32	5/16	2-1/4	FLH8	ZEXTF-8
No. 10	1/8	5/16	2-1/4	FLH10	ZEXTF-10
1/4	5/32	5/16	2-1/4	FLH14	ZEXTF-14
5/16	3/16	5/16	3/4	FLH51	ZEXTF-51
3/8	7/32	5/16	3	FLH38	ZEXTF-38
7/16	1/4	5/16	3-1/4	FLH71	ZEXTF-71
1/2	5/16	3/8	3-1/2	FLH12	ZEXTF-12
5/8	3/8	7/16	3.625	FLH58	ZEXTF-58
3/4	1/2	9/16	3.625	FLH34	ZEXTF-34
7/8	9/16	5/8	3.625	FLH78	ZEXTF-78
1	5/8	3/4	3.625	FLH01	ZEXTF-01

### Flat-Head Socket Screw Extractors, Metric

For Screw Size	Recess Wd.	Across the Flats	O'all Length	Engraved Size	Steel Black Ox Part Number
M3	2mm	8mm	2-1/4	FLHM3	ZEXTF-M3
M4	2.5mm	8mm	2-1/4	FLHM4	ZEXTF-M4
M5	3mm	8mm	2-1/4	FLHM5	ZEXTF-M5
M6	4mm	8mm	2-1/4	FLHM6	ZEXTF-M6
M8	5mm	8mm	2-3/4	FLHM8	ZEXTF-M8
M10	6mm	8mm	3-1/4	FLHM10	ZEXTF-M10
M12	8mm	9mm	3-1/2	FLHM12	ZEXTF-M12
M14	10mm	9mm	3-1/2	FLHM14	ZEXTF-M14



### Flat-Head Socket Screw Extractors Sets

Set contains following extractors	No. of Extractors included	Steel Black Ox Part Number
No. 6, No. 8, No. 10, 1/4	4	ZEXTF-SET6-14
1/4, 5/16, 3/8, 7/16, 1/2	5	ZEXTF-SET14-12
5/8, 3/4	2	ZEXTF-SET58-34
7/8, 1	2	ZEXTF-SET78-01
M3, M4, M5, M6	4	ZEXTF-SETM3-M6
M6, M8, M10, M12, M16	5	ZEXTF-SETM6-M14



Steel

## QUICK OUTS™ Socket-Screw Extractors – Inch & Metric

Steel, Black Oxide



### Socket Set Screw Extractors, Inch

For Screw Size	Recess Wd.	Across the Flats	O'all Length	Engraved Size	Steel Black Ox Part Number
No. 6	1/16	5/16	2-1/4	SET6	ZEXTS-6
No. 8	5/64	5/16	2-1/4	SET8	ZEXTS-8
No. 10	3/32	5/16	2-1/4	SET10	ZEXTS-10
1/4	1/8	5/16	2-1/4	SET14	ZEXTS-14
5/16	5/32	5/16	2-3/4	SET51	ZEXTS-51
3/8	3/16	5/16	3	SET38	ZEXTS-38
7/16	7/32	5/16	3-1/4	SET71	ZEXTS-71
1/2	1/4	5/16	3-1/2	SET12	ZEXTS-12
5/8	5/16	3/8	3-5/8	SET58	ZEXTS-58
3/4	3/8	7/16	3-5/8	SET34	ZEXTS-34
7/8	1/2	9/16	3-5/8	SET78	ZEXTS-78
1	9/16	5/8	3-5/8	SET01	ZEXTS-01

### Socket Set Screw Extractors Metric

For Screw Size	Recess Wd.	Across the Flats	O'all Length	Engraved Size	Steel Black Ox Part Number
M3	1.5mm	8mm	2-1/4	SETM3	ZEXTS-M3
M4	2mm	8mm	2-1/4	SETM4	ZEXTS-M4
M5	2.5mm	8mm	2-1/4	SETM5	ZEXTS-M5
M6	3mm	8mm	2-1/4	SETM6	ZEXTS-M6
M8	4mm	8mm	2-3/4	SETM8	ZEXTS-M8
M10	5mm	8mm	3-1/4	SETM10	ZEXTS-M10
M12	6mm	8mm	3-1/2	SETM12	ZEXTS-M12
M14	6mm	8mm	3-1/2	SETM14	ZEXTS-M14
M16	8mm	9mm	3-5/8	SETM16	ZEXTS-M16



### Socket Set Screw Extractors Sets

Set contains following extractors	No. of Extractors included	Steel Black Ox Part Number
No. 6, No. 8, No. 10, 1/4	4	ZEXTS-SET6-14
1/4, 5/16, 3/8, 7/16, 1/2	5	ZEXTS-SET14-12
5/8, 3/4	2	ZEXTS-SET58-34
7/8, 1	2	ZEXTS-SET78-01
M3, M4, M5, M6	4	ZEXTS-SETM3-M6
M6, M8, M10, M12, M16	5	ZEXTS-SETM6-M16

## Threaded Hole Transfer Punches – Inch & Metric

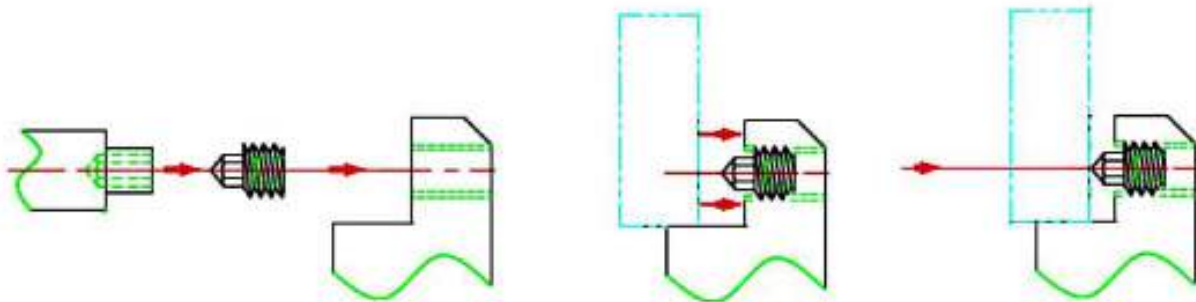
1144 Stress-Proof Steel | Black Oxide (body)  
18-8 Stainless Steel (cap)



### Product Information

Also known as transfer screws, these punches can be used in any threaded hole to transfer the hole location. Each set includes six steel punches stored in the handle. Use the handle to screw a punch into a hole. Place your workpiece against the punch and strike it with a hammer to mark the hole location.

Useful for tool and machine maintenance, die making and other general repairs. Handles are engraved with thread size. Threaded Hole Transfer Punches are made from 1144 stress-proof steel while the caps are made from 18-8 stainless steel. Available in Inch and Metric sizes. Made in the USA.



## Threaded Hole Transfer Punches – Inch



## Threaded Hole Transfer Punches, Inch

Thread Size	Description	AMPG Part Number
1-64	(6) Heat Treated 1-64 Punches and (1) Handle/Wrench/Carrying Case	ZTP164
2-56	(6) Heat Treated 2-56 Punches and (1) Handle/Wrench/Carrying Case	ZTP256
3-48	(6) Heat Treated 3-48 Punches and (1) Handle/Wrench/Carrying Case	ZTP348
3-56	(6) Heat Treated 3-56 Punches and (1) Handle/Wrench/Carrying Case	ZTP356
4-40	(6) Heat Treated 4-40 Punches and (1) Handle/Wrench/Carrying Case	ZTP440
4-48	(6) Heat Treated 4-48 Punches and (1) Handle/Wrench/Carrying Case	ZTP448
5-40	(6) Heat Treated 5-40 Punches and (1) Handle/Wrench/Carrying Case	ZTP540
5-44	(6) Heat Treated 5-44 Punches and (1) Handle/Wrench/Carrying Case	ZTP544
6-32	(6) Heat Treated 6-32 Punches and (1) Handle/Wrench/Carrying Case	ZTP632
6-40	(6) Heat Treated 6-40 Punches and (1) Handle/Wrench/Carrying Case	ZTP640
8-32	(6) Heat Treated 8-32 Punches and (1) Handle/Wrench/Carrying Case	ZTP832
8-36	(6) Heat Treated 8-36 Punches and (1) Handle/Wrench/Carrying Case	ZTP836
10-24	(6) Heat Treated 10-24 Punches and (1) Handle/Wrench/Carrying Case	ZTP1024
10-32	(6) Heat Treated 10-32 Punches and (1) Handle/Wrench/Carrying Case	ZTP1032
12-24	(6) Heat Treated 12-24 Punches and (1) Handle/Wrench/Carrying Case	ZTP1224
12-28	(6) Heat Treated 12-28 Punches and (1) Handle/Wrench/Carrying Case	ZTP1228
3/16-24	(6) Heat Treated 3/16-24 Punches and (1) Handle/Wrench/Carrying Case	ZTP31624
3/16-32	(6) Heat Treated 3/16-32 Punches and (1) Handle/Wrench/Carrying Case	ZTP31632
1/4-20	(6) Heat Treated 1/4-20 Punches and (1) Handle/Wrench/Carrying Case	ZTP1420
1/4-28	(6) Heat Treated 1/4-28 Punches and (1) Handle/Wrench/Carrying Case	ZTP1428
5/16-18	(6) Heat Treated 5/16-18 Punches and (1) Handle/Wrench/Carrying Case	ZTP51618
5/16-24	(6) Heat Treated 5/16-24 Punches and (1) Handle/Wrench/Carrying Case	ZTP51624
3/8-16	(6) Heat Treated 3/8-16 Punches and (1) Handle/Wrench/Carrying Case	ZTP3816
3/8-24	(6) Heat Treated 3/8-24 Punches and (1) Handle/Wrench/Carrying Case	ZTP3824
7/16-14	(6) Heat Treated 7/16-14 Punches and (1) Handle/Wrench/Carrying Case	ZTP71614
7/16-20	(6) Heat Treated 7/16-20 Punches and (1) Handle/Wrench/Carrying Case	ZTP71620
1/2-13	(6) Heat Treated 7/16-14 Punches and (1) Handle/Wrench/Carrying Case	ZTP1213
1/2-20	(6) Heat Treated 1/2-20 Punches and (1) Handle/Wrench/Carrying Case	ZTP1220
9/16-12	(6) Heat Treated 9/16-12 Punches and (1) Handle/Wrench/Carrying Case	ZTP91612
9/16-18	(6) Heat Treated 9/16-18 Punches and (1) Handle/Wrench/Carrying Case	ZTP91618
5/8-11	(6) Heat Treated 5/8-11 Punches and (1) Handle/Wrench/Carrying Case	ZTP5811

## Threaded Hole Transfer Punches – Inch



### Threaded Hole Transfer Punches, Inch

Thread Size	Description	AMPG Part Number
5/8-18	(6) Heat Treated 5/8-18 Punches and (1) Handle/Wrench/Carrying Case	ZTP5818
3/4-10	(6) Heat Treated 3/4-10 Punches and (1) Handle/Wrench/Carrying Case	ZTP3410
3/4-16	(6) Heat Treated 3/4-16 Punches and (1) Handle/Wrench/Carrying Case	ZTP3416
7/8-9	(6) Heat Treated 7/8-9 Punches and (1) Handle/Wrench/Carrying Case	ZTP789
7/8-14	(6) Heat Treated 7/8-14 Punches and (1) Handle/Wrench/Carrying Case	ZTP7814
1-8	(6) Heat Treated 1-8 Punches and (1) Handle/Wrench/Carrying Case	ZTP1-8
1-14	(6) Heat Treated 1-14 Punches and (1) Handle/Wrench/Carrying Case	ZTP1-14
1-1/8-7	(6) Heat Treated 1-1/8-7 Punches and (1) Handle/Wrench/Carrying Case	ZTP118-7
1-1/8-12	(6) Heat Treated 1-1/8-12 Punches and (1) Handle/Wrench/Carrying Case	ZTP118-12
1-1/4-7	(6) Heat Treated 1-1/4-7 Punches and (1) Handle/Wrench/Carrying Case	ZTP114-7
1-1/4-12	(6) Heat Treated 1-1/4-12 Punches and (1) Handle/Wrench/Carrying Case	ZTP114-12
1-1/2-6	(6) Heat Treated 1-1/2-6 Punches and (1) Handle/Wrench/Carrying Case	ZTP112-6
1-1/2-12	(6) Heat Treated 1-1/2-12 Punches and (1) Handle/Wrench/Carrying Case	ZTP112-12



### Threaded Hole Transfer Punches Sets, Inch

Description	AMPG Part Number
(4) 4-40, (4) 6-32, (4) 8-32, (4) 10-24 Punches, (1) Wrench, (1) Plastic Fitted Case	ZTPSET1
(4) 1/4-20, (4) 5/16-18, (4) 3/8-16, (4) 7/16-14 Punches, (1) Wrench, (1) Plastic Fitted Case	ZTPSET2
(4) 1/2-13, (4) 9/16-12, (4) 5/8-11, (4) 3/4-10 Punches, (1) Wrench, (1) Plastic Fitted Case	ZTPSET3



## Threaded Hole Transfer Punches – Metric



## Threaded Hole Transfer Punches, Metric

Thread Size	Description	AMPG Part Number
M2.5 x 0.45	(6) Heat Treated M2.5 x 0.45 Punches and (1) Handle/Wrench/Carrying Case	ZTPM2.5
M2.6 x 0.45	(6) Heat Treated M2.6 x 0.45 Punches and (1) Handle/Wrench/Carrying Case	ZTPM2.6
M3 x 0.50	(6) Heat Treated M3 x 0.5 Punches and (1) Handle/Wrench/Carrying Case	ZTPM3
M3.5 x 0.60	(6) Heat Treated M3.5 x 0.60 Punches and (1) Handle/Wrench/Carrying Case	ZTPM3.5
M4 x 0.70	(6) Heat Treated M4 x 0.70 Punches and (1) Handle/Wrench/Carrying Case	ZTPM4
M5 x 0.80	(6) Heat Treated M5 x 0.80 Punches and (1) Handle/Wrench/Carrying Case	ZTPM5
M6 x 1.00	(6) Heat Treated M6 x 1.00 Punches and (1) Handle/Wrench/Carrying Case	ZTPM6
M8 x 1.25	(6) Heat Treated M8 x 1.25 Punches and (1) Handle/Wrench/Carrying Case	ZTPM8
M10 x 1.50	(6) Heat Treated M10 x 1.50 Punches and (1) Handle/Wrench/Carrying Case	ZTPM10
M12 x 1.75	(6) Heat Treated M12 x 1.75 Punches and (1) Handle/Wrench/Carrying Case	ZTPM12
M14 x 2.00	(6) Heat Treated M14 x 2.00 Punches and (1) Handle/Wrench/Carrying Case	ZTPM14
M16 x 2.00	(6) Heat Treated M16 x 2.00 Punches and (1) Handle/Wrench/Carrying Case	ZTPM16
M18 x 2.50	(6) Heat Treated M18 x 2.50 Punches and (1) Handle/Wrench/Carrying Case	ZTPM18
M20 x 2.50	(6) Heat Treated M20 x 2.50 Punches and (1) Handle/Wrench/Carrying Case	ZTPM20
M22 x 2.50	(6) Heat Treated M22 x 2.50 Punches and (1) Handle/Wrench/Carrying Case	ZTPM22
M24 x 3.00	(6) Heat Treated M24 x 3.00 Punches and (1) Handle/Wrench/Carrying Case	ZTPM24
M27 x 3.00	(6) Heat Treated M27 x 3.00 Punches and (1) Handle/Wrench/Carrying Case	ZTPM27
M30 x 3.50	(6) Heat Treated M30 x 3.50 Punches and (1) Handle/Wrench/Carrying Case	ZTPM30

## Threaded Hole Transfer Punches Sets, Metric

Description	AMPG Part Number
(4) M3 x 0.5, (4) M4 x 0.7, (4) M5 x 0.8, (4) M6 x 1.0 Punches, (1) Wrench, (1) Plastic Fitted Case	ZTPSET4
(4) M6 x 1.0, (4) M8 x 1.25, (4) M10 x 1.5, (4) M12 x 1.75 Punches, (1) Wrench, (1) Plastic Fitted Case	ZTPSET5
(4) M14 x 2.0, (4) M16 x 2.0, (4) M20 x 2.5, (4) M24 x 3.0 Punches, (1) Wrench, (1) Plastic Fitted Case	ZTPSET6



## Drawbars for Milling Machines – Inch



Low Carbon Steel | Black Oxide

### Product Information

Manufactured from low carbon steel, soft and black oxide plated. Drawbars are manufactured from two parts – the shaft and the hex.



Fits Milling Machine	Overall Length	Hex Length	Shaft Length	Thread & Length	Spacer Length	Part Number
<b>Bridgeport &amp; Copies</b>						
2J Vari Speed Head	22-3/4	4-1/4	18-1/2	7/16-20 x 1-3/4	1/4	Z9005
1J Step Pulley Head	20-1/4	1-3/4	18-1/2	7/16-20 x 1-1/2	1/4	Z9004
<b>Lagun</b>						
Vari Speed Head	25-7/8	7-1/4	18-5/8	7/16-20 x 1-1/2	none	Z9005LAGR
<b>Wells Index</b>						
Vari Speed Head	24-1/2	5-1/4	19-1/4	7/16-20 x 2	none	Z9005WEL
<b>Kondia</b>						
Vari Speed Head	23-1/4	4-1/4	19	7/16-20 x 1	1/4	Z9005KON
<b>Excello</b>						
Vari Speed Head	23	3-1/2	19-1/2	7/16-20 x 1	1/4	Z9005EXC

## The Universal Drawbar – Inch



Low Carbon Steel | Black Oxide

### Product Information

AMPG's Universal Draw Bar was developed by our engineering staff in response to requests from many customers who were unable to find Drawbars to fit their machines. Both the Hex or wrench end, and the threaded end were designed with enough adjustments to fit almost any machine in use today. The Universal Drawbar is provided with a variety of spacers which allows the user to adjust the shaft length (measured from under the spacer to the end of the threaded shaft) from a maximum length of 20", down to 17-1/4". Sufficient spacers are included to allow shaft length adjustments by one quarter inch increments.

The 7/16-20 thread on the shaft is a full 1-1/2" long, and can be used with any R-8 collet. The Hex head measures 7-1/4" long, which will accommodate a wide range of milling machines. All the above attributes give a wide range of flexibility and allow this drawbar to be fitted onto a wide variety of milling machines. The overall length of the drawbar is 27-1/2". Material is low carbon steel, unhardened, with black oxide finish.



Part Number

Z9005UNIV

Steel,  
Aluminum

## Drawbars for Milling Machines w/Right Angle Attachments – 1/2 Inch

Low Carbon Steel | Black Oxide



Fits Milling Machine	Overall Length	Hex Length	Shaft Length	Thread Size	Spacer Length	Part Number
Bridgeport & Kondia	26-1/4	7-3/4	18-1/2	7/16-20	1/4	Z9005R1
Index & Lagun	29	10-3/4	18-1/4	7/16-20	1/4	Z9005R2
Alliant & Sharp	27-1/4	9	18-1/4	7/16-20	1/4	Z9005R3

## Quill Feed Handles – 1/2 Inch

Steel | Zinc Plated



### Product Information

Quill Feed Handle for Bridgeport Mills Machines. Speeds up all quill operations. A flick of the wrist retracts the pin from the quill feed index plate, allowing you to move the handle to any desired position. Eliminates the slow process of pulling off the standard quill feed handle, and resetting it for different positions.



Fits Milling Machine	Part Number
Bridgeport Mills	Z9900

## Spider Handle – 1/2 Inch

Aluminum | Plain (Machined Center)  
Steel | Black Oxide (Spokes)



### Product Information

A quality USA made Spider Handle that replaces the standard quill feed handle on most milling machines. Perfect for all drilling operations. Sturdy construction features a solid aluminum machined center (not a casting), with a 1" bore and a 3" diameter. (3) heavy duty solid steel spokes and knobs extend approx. 6-1/2" from the center. Plated finish.



Part Number
Z9910

## Precision Adjustable Mill Stop – Inch



Steel | Black Oxide

### Product Information

**A rigid stop for milling set ups.** Mounts to the table. This time saving and handy accessory was designed for use on Milling Machines, Jig Borers, and for horizontal and vertical milling set ups. Use with Angle Plates, Vises, Jigs, etc. to serve as a rigid stop.

- 1/2" hole for T Slot mounting
- 3/8" Diameter Rod x 7" Long
- Base 2" x 4-1/2"
- Overall height: 7"
- Steel, Black Oxide Plated
- Weight— 3lbs.



## Quill Stop – Inch



Aluminum | Plain

### Product Information

For All Milling Machines—Quickly Sets Quill Depth. To insure a perfectly aligned Quill Stop, we assemble each stop, then face it off, drill and tap it. This process is expensive but it guarantees you the finest Quill Stop.

- Quick Action Clipping
- Rapid Depth Setting
- Easily and Quickly Removable
- Extra Strong Spring
- Easily Positioned
- Sturdy Aluminum Knobs
- Positive Locking Action
- Unconditionally Guaranteed

Description	Part Number
1/2-20 threads for Mills	Z9006
1/4-20 threads for Drill Presses	Z9006A
3/8-24 threads for Drill Presses	Z9006B



Z9006



Z9006A



Z9006B

## Shell End Mill Arbor Screws – Inch



Steel | Black Oxide and Oiled

### Product Information

Fits Style "C" and other styles of Shell End Mill Arbor. Cold Rolled Steel heat treated to Carbonized to Rc C45-50.



Thread Sizes	Head Diameter	Head Height	Thread Length	Part Number
1/4-28	5/8	17/64	1/2	Z1500
3/8-24	7/8	19/64	5/8	Z1501
1/2-20	1-3/16	5/16	13/16	Z1502
5/8-18	1-1/2	5/16	61/64	Z1503
3/4-16	1-7/8	23/64	1-1/8	Z1504
1-14	2-1/2	7/16	1-1/4	Z1505



Steel



## Milling Machine Arbor Spacers – Inch

Steel | Hardened

### Product Information

Ground for parallel and perpendicular surfaces to insure that Milling Cutters mounted on a Milling Arbor operates correctly.



Thickness	ID	OD	Keyway	Part Number
1/4	1	1-1/2	1/4	ARB112
	1-1/4	1-3/4	5/16	ARB113
	1-1/2	2-1/8	3/8	ARB114
	2	2-3/4	1/2	ARB115
3/8	1	1-1/2	1/4	ARB212
	1-1/4	1-3/4	5/16	ARB213
	1-1/2	2-1/8	3/8	ARB214
	2	2-3/4	1/2	ARB215

Thickness	ID	OD	Keyway	Part Number
1/2	1	1-1/2	1/4	ARB312
	1-1/4	1-3/4	5/16	ARB313
	1-1/2	2-1/8	3/8	ARB314
	2	2-3/4	1/2	ARB315
3/4	1	1-1/2	1/4	ARB412
	1-1/4	1-3/4	5/16	ARB413
	1-1/2	2-1/8	3/8	ARB414
	2	2-3/4	1/2	ARB415
1	1	1-1/2	1/4	ARB512
	1-1/4	1-3/4	5/16	ARB513
	1-1/2	2-1/8	3/8	ARB514
	2	2-3/4	1/2	ARB515

## 5C Fixture Mounts – Inch

Low Carbon Steel



### Product Information

A lathe tool for use in place of face plate fixturing. Has a 5C back for quick mounting, and a soft face for ease of machining to your workpiece. Used on Lathes with 5C spindles – for turning or boring odd shaped parts that cannot go into a collet. Useful for turning any off center holes, or odd shapes. Machinable soft face allows you to mill the fixture mount to accept the work piece, then drill and tap holes to clamp the part onto the fixture mount. Boring off-center holes is the perfect application. Mount the work piece with clamps to the fixture mount off-center, to perform the required bore, which would line up to the lathe center point. Excellent for working on castings. Mounts and dismounts very quickly – takes the same amount of time as mounting a 5C collet. You can design the clamping system to hold your part, so that by loosening a few screws, you can mount and dismount your parts for production.

The longer lengths are used for long parts. Boring into the fixture mount allows you to nest the long part inside, increasing the rigidity of the part being machined. The longer heads can be faced off after one part is done, presenting a fresh face for reuse! Also can be used on Mills– 5C Collet fixtures can use this for fixturing parts for measuring, or any secondary operations on the Mills.



Face Diameter	Face Length	Overall Length	Part Number
2	1	4-1/2	Z9560
2	3	6-1/2	Z9561
3	1	4-1/2	Z9564
3	3	6-1/2	Z9565
4	1	4-1/2	Z9569
5	1	4-1/2	Z9575

## 5C Mount Precision Chucks – Inch Steel



### Product Information

These handy accessories for Lathe Collets eliminates tearing down a collet set up on a lathe when working with material diameters that you don't have the correct size collets for. Our 5C precision chucks work with any 5C tooling! To mount your own 3" or 4" Chucks, see our Fixture Mounts. Chuck is imported, adapter back is manufactured in the USA.



Chuck Diameter	O.D Clamping Range	I.D Holding Range	Hole Size 5C Back	Hole Size Thru Chuck	T.I.R Repeatability	Weight	Part Number
3" 3-Jaw, Self-Centering (Extra Chuck Jaws & Chuck Key included)	5/64 thru 2-15/32	63/64 thru 2-3/4	3/4	5/8	.003	5 lbs	Z9550
3" 4-Jaw, Independent (Chuck Key included)	5/8 thru 2-1/2	45/64 thru 2-1/2	3/4	57/64	.003	5lbs	Z9551
4" 3-Jaw, Self-Centering (Chuck Jaws & Chuck Key included)	5/64 thru 3-5/32	1-3/16 thru 3-35/64	3/4	7/8	.003	9 lbs	Z9552

## 5C Adapter Body – Inch Steel | Black Oxide



### Part Number

Z1140

### Product Information

Used to customize for your exact workpiece. Works anywhere a 5C Collet can be used. Insert the Expander Pin, bore, mill, or step out to size, remove the pin, and go! 5C Adapter body takes steel or aluminum heads.



## Soft Collet Heads – Inch Steel | Black Oxide Aluminum | Natural



### Product Information

Each Soft Collet Head comes with one expander pin and fits the Z1140 5 C Adapter Body shown above.



Head Diameter	Head Thickness	Steel Part Number	Aluminum Part Number
1-1/2"	7/8	Z1153	Z1157
2	3/4	Z1145	Z1149
2	1-1/4	Z1154	Z1158
2-1/2	1	Z1146	Z1150
2-1/2	1-1/2	Z1155	Z1159
3	1	Z1147	Z1151
3	1-5/8	Z1156	Z1160
4	1	Z1148	Z1152

Steel

## Internal Expanding Collet Heads – 1/2 Inch

Steel | Black Oxide



LIMITED SUPPLY



### Product Information

Internal expanding collet heads offer a time-saving solution for machinists who frequently change workpieces. Unlike traditional chucks that require a complete stop to exchange parts, these collets allow for mid-cycle changes with the spindle still running. This is achieved through a conventional draw bar mechanism that expands the collet internally while the machine operates. The collet itself is designed to securely grip the workpiece without risk of pushing out or pulling in during operation, maintaining precise dimensional accuracy throughout the process.

Collet Dia Range	Collet Length	Part Number
5/16 to 9/16	5/8	Z1105
1/2 to 1	1	Z1106
1/2 to 1	1-3/4	Z1107
1/2 to 1-1/2	1	Z1108
1/2 to 1-1/2	1-3/4	Z1109
1/2 to 2	1	Z1110
1/2 to 2	1-3/4	Z1111
1/2 to 2-1/2	1	Z1112
1/2 to 2-1/2	1-3/4	Z1113
1/2 to 2-15/16	1	Z1114
1/2 to 3-15/16	1	Z1115
1/2 to 4-15/16	1	Z1116

## Adjustable Collet Stop – 1/2 Inch

Steel | Black Oxide



### Product Information

Adjustable Stop has fine threaded stud for incremental positioning. Screwdriver slot in stud allows for quick and accurate setting. Stud is 4" inch.



Part Number

Z9002

## Universal 5C Collet Stop – 1/2 Inch

Steel | Black Oxide



LIMITED SUPPLY

### Product Information

5 piece set converts standard 1" Lathe Collets into solid or ejector stop collets. Comes complete with all attachments and spacers.



Main Expanding Body

Part Number

Z9003

## 5C Extra Length Collet Stop – 1/2 Inch

Steel | Black Oxide



LIMITED SUPPLY

### Product Information

For chucking parts to a depth of 7-1/2" from collet face. Stop stud is 7/16" diameter.



Part Number

Z8997

Steel,  
Brass

## 5C “Finger” Collet Stop – Inch

Steel | Black Oxide



**Part Number**

Z8996

### Product Information

5 piece set is versatile with quick adjusting.

Complete set includes:

- (1) Stop body
- (1) Extra 1/8” diameter end rod
- (1) Extra 1/2” diameter end rod
- (1) Extra 3/4” diameter end rod
- (1) Extra 1” diameter end rod

## Reducer Bushing for Air Die Grinders – Inch

Brass | Natural



**Part Number**

Z2100

### Product Information

1/4” to 1/8” Reducer Bushing

A quick change solution that allows the use of any tool with a 1/8” shank tool in a 1/4” Collet. Precision USA made split brass bushing grips tightly.

## Slitting Saw Arbors – Inch

Steel | Case Hardened | Black Oxide



**LIMITED SUPPLY**

### Product Information

Long, Precision Ground, extra rigid Arbors are manufactured by AMPG here in the USA. We grind the shanks after machining and heat treating for best results. 6 sizes with ground Weldon Flat shanks. Bodies are ground to match the caps.

Tolerances:

+/- .003 concentricity from shank to mating bore of cap.

+/- .001 square from shank to clamping surface of cap.



\*Saw blade not included

Fits Saw ID	OD	Cap Height	Body Length	Shank Length	Shank Diameter	Part Number
3/8	5/8	.080	1-3/16	1.700	1/2	Z1305
1/2	3/4	.095	1-3/8	1.700	1/2	Z1310
5/8	1	.122	1-1/2	2.030	3/4	Z1315

## 3 Pc. Slitting Saw Arbor Set – Inch

Steel | Case Hardened | Black Oxide



**LIMITED SUPPLY**

### Product Information

Fits Saws 5/8”, 1”, 1-1/4”.

**Part Number**

Z1335





## 8 Piece Expanding Arbor Set – Inch

Low Carbon Steel | Black Oxide



### Product Information

Chuck the Expanding Arbor in your Machine Tool, tighten the expansion screw, and the Arbor expands by up to 0.002". Machine the Arbor to your correct part holding dimensions. Back off the Expansion screw reducing the Arbor diameter, position your part on the Arbor, and re-tighten. Includes one plastic organizer block.

- 8 Piece Set Includes:
- (1) 1/4" Arbor (Z9110)
  - (1) 3/8" Arbor (Z9111)
  - (1) 1/2" Arbor (Z9112)
  - (1) 5/8" Arbor (Z9113)
  - (1) 3/4" Arbor (Z9114)
  - (1) 7/8" Arbor (Z9115)
  - (1) 1" Arbor (Z9116)
  - (1) 1-1/4" Arbor (Z9117)
  - (1) AMPG Organizer Block

Part Number

Z9125



## 3 Pc. Expanding Arbor Set – Inch

Low Carbon Steel | Black Oxide



3 Piece Set Includes:

- (1) 1-1/2" Arbor (Z9118)
- (1) 1-3/4" Arbor (Z9119)
- (1) 2" Arbor (Z9120)
- (1) AMPG Organizer Block

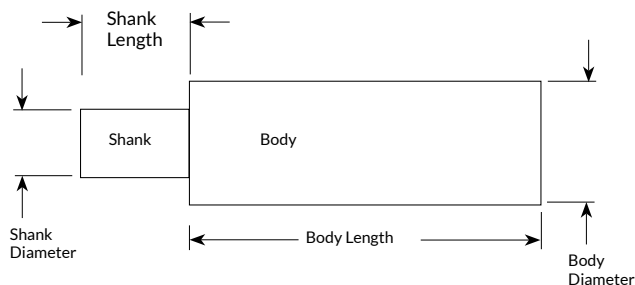
Part Number

Z9121



## Individual Expanding Arbors – Inch

Low Carbon Steel | Black Oxide



Body Diameter	Body Length	Shank Diameter	Shank Length	Replacement Screw	Part Number
1/4	4	none	none	Z9110-2	Z9110
3/8	4	none	none	Z9111-2	Z9111
1/2	4	none	none	Z9111-2	Z9112
5/8	4	none	none	Z9113-2	Z9113
3/4	4	none	none	Z9113-2	Z9114
7/8	4	none	none	Z9115-2	Z9115
1	4	none	none	Z9115-2	Z9116
1-1/4	2-1/2	1	1-7/16	Z9115-2	Z9117
1-1/2	2-1/2	1	1-7/16	Z9118-2	Z9118
1-3/4	2-1/2	1	1-7/16	Z9118-2	Z9119
2	2-1/2	1	1-7/16	Z9118-2	Z9120
2-1/2	2-1/2	1	1-7/16	Z9118-2	Z9122
3	2-1/2	1	1-7/16	Z9118-2	Z9123

Steel,  
Aluminum

## Vise Speed Handles — 1/2 Inch



Aluminum | Natural  
Steel | Black Oxide

### Product Information

For All Sizes of Milling Machine Vises. Quality made in our shop, we offer this Speed Handle with a choice of Hub Centers. New design nests the steel arms inside the solid aluminum hub for a much stronger unit.

- Hub is machined Aluminum.
- (3) Arms project about 4-1/2" inches from hub, and are cold rolled steel, with a plated finish.
- Hub height is approx. 1-9/16".
- Handle weighs 1.7 Lbs.



Description	Part Number
9/16" Hex Broach - Fits 4" Vise	Z9022
5/8 Hex Broach - Fits 5" Vise	Z9024
3/4 Hex Broach - Fits 6" Vise	Z9021
7/8 Hex Broach - Fits 8" Vise	Z9025
5/8 Square Broach - Fits Imports	Z9023

## Aluminum Soft Jaws for Vises — 1/2 Inch



LIMITED SUPPLY

Aluminum | Natural

### Product Information

Aluminum Vise Jaws create a larger, machinable, and customizable holding jaw on your vise. Create steps, pockets, and custom shapes to hold all types of odd shaped workpieces. May be machined over and over again for use on many jobs.



Fits Vise	Length	Height	Thickness	Bolt Size	Part Number
4	4	1-1/2	3/4	3/8	Z1190
5	5	1-1/2	3/4	7/16	Z1191
6	6	2	3/4	1/2	Z1192
6	6	2-1/2	1	1/2	Z1193
6	6	3	1	1/2	Z1194
6	6	3	1-1/2	1/2	Z1195
7	7	2	1-1/4	1/2	Z1196

## Hand E-Key Chuck Keys — 1/2 Inch



Aluminum | Anodized Finish

### Product Information

Patented. Handle Material: 6061T6 Aluminum with protective anodized finish.



Chuck Key Size	Part Number
K0	Z0360
K1	Z0361
K2	Z0362
K3	Z0365
K7	Z0366
K30	Z0367
K32	Z0368

Steel

## Work Stop for Milling Machine Vises – 1/2 Inch



Steel | Black Oxide

### Product Information

For quick and easy position of workpieces.

- Bolts on to Vise without any modifications.
- Secure and rigid stopping action.
- Works right or left hand location, any jaw height.
- Quick adjusting, perfect for production runs.

Description	Part Number
fits 3-4" Vises	Z9017
fits 5-6" Vises	Z9018
fits 8" Vises	Z9015



Main Body:

7/8" square x 9.5" overall length

Stop Rod: 3/4" round x 6" overall length

Weight: 2-1/2 Lbs each

## E-Z Vise Stop – 1/2 Inch



Hardened Steel | Black Oxide

### Product Information

Attaches to any Vise jaw (1/2" thru 1" wide) with one screw adjustment. Stop is 1" wide by 1-7/16" long.

Part Number
Z9030



## Mini Vise Stop – 1/2 Inch



Hardened Steel | Black Oxide

### Product Information

Has the capacity to accept jaws up to 0.740" wide, and the three socket screws provide a secure stop.

Part Number
Z9029



## Mini Stop – 1/2 Inch



Hardened Steel | Black Oxide

### Product Information

Can be used on vise jaws up to .740" wide.

Part Number
Z9031



## Arbor Press Work Stop – 1/2 Inch



Hardened Steel | Black Oxide

### Product Information

This is a handy stop that fits most standard Arbor Presses. A quick and secure double set screw mounting system provides a positive lock, that stops the ram of the arbor press at your pre-set point. An adjustment screw allows fine adjustment of the ram travel. Speeds up and improves the quality of production and prototype operations.



Fits	OD	Part Number
3/4 Square Ram	2	Z1197
1 Square Ram	2-1/8	Z1198
1-1/4 Square Ram	2-1/4	Z1199

## Lathe Mandrels – Inch Alloy Steel – Black Oxide

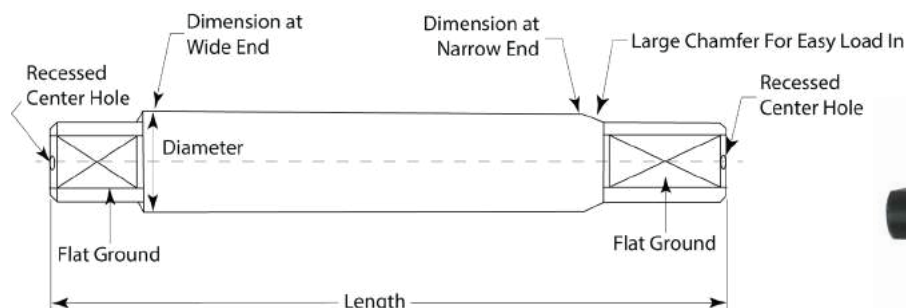


### Product Information

These Mandrels are ground to a .0005 per inch taper – starting at the nominal to .0005 under size at the small end. The undersized end has ground flats and a large chamfer for easy lead in of the bore. Use an Arbor Press to press a workpiece securely on, starting at the narrow end with ground flat.

100% Made in USA. Alloy Steel Hardened to Rc C30-C40 and precision ground. Packed in protective tubes with rust preventative paper.

- AMPG products are made in the USA, precision machined from DFARS compliant material, and lot traceable.
- Ends have a black oxide finish that offers mild resistance from rust.



### Lathe Mandrels, Inch

Diameter	Length	Dimension at Narrow End	Dimension at Wide End	Alloy Steel Part Number
1/8	2-1/2	.1250 - .1245	.1251 - .1261	ZLM1252500
3/16	3	.1875 - .1870	.1890 - .1900	ZLM1873000
1/4	3-3/4	.2500 - .2495	.2502 - .2512	ZLM2503750
5/16	4	.3125 - .3120	.3145 - .3155	ZLM3124000
3/8	4-1/4	.3750 - .3745	.3760 - .3770	ZLM3754250
7/16	4-1/2	.4375 - .4370	.4395 - .4405	ZLM4374500
1/2	5	.5000 - .4995	.5025 - .5035	ZLM5005000
9/16	5-1/4	.5625 - .5620	.5645 - .5655	ZLM5625250
5/8	5-1/2	.6250 - .6245	.6280 - .6290	ZLM6255500
3/4	6	.7500 - .7495	.7530 - .7540	ZLM7506000
7/8	6-1/2	.8750 - .8745	.8780 - .8790	ZLM8756500
1	7	1.000 - .9995	1.0035 - 1.0045	ZLM10007000



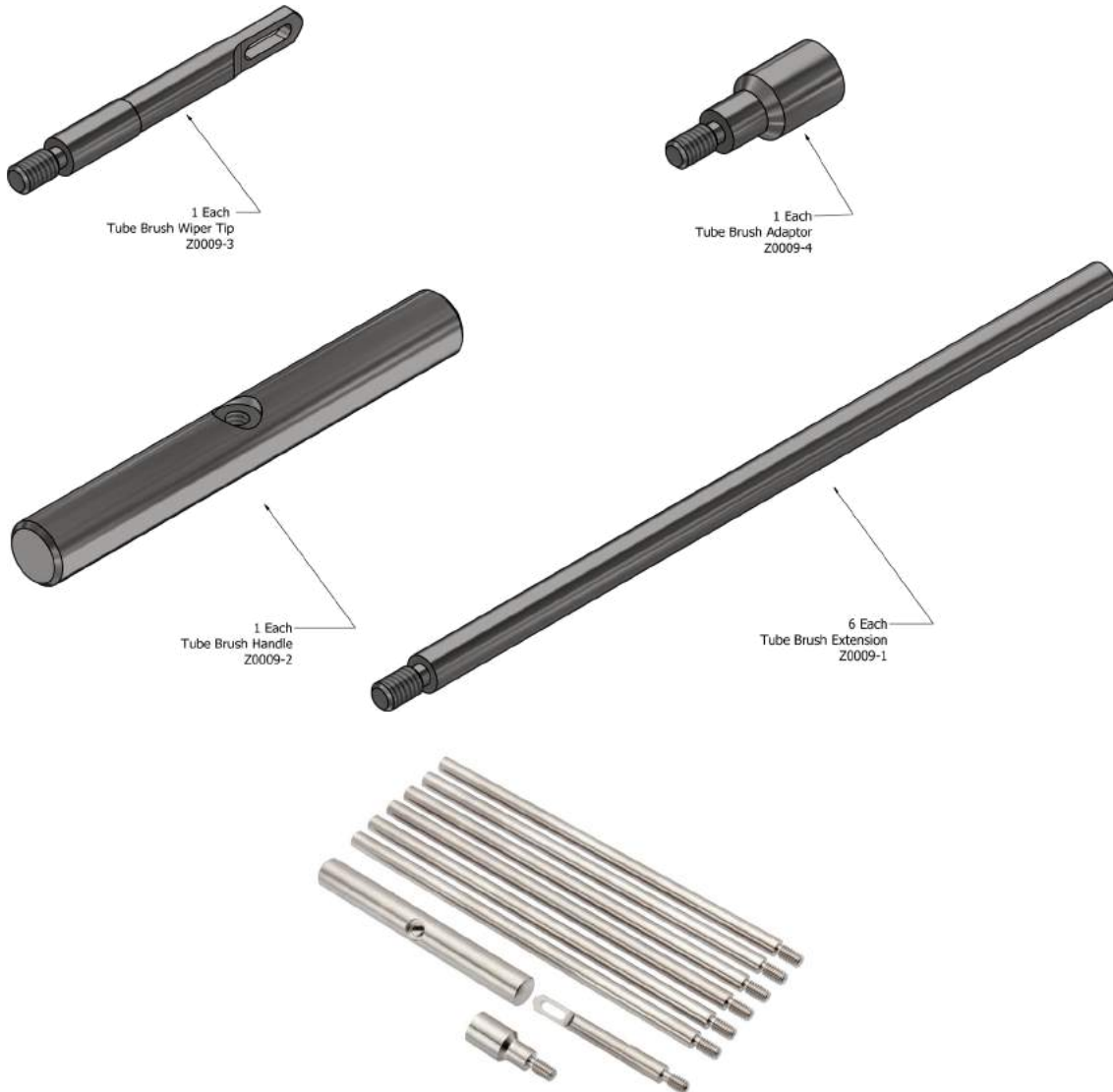


# Handle and Extension Rod Kits for Threaded-Shank Tube Brushes – Inch

18-8 SS | Natural

## Product Information

Add length to your brush and get a better grip. T-Handle with Six Extension Rods, One Wiper and One 8-32 To 5/16 Adapter.



### T-Handle with Extension Rods, Inch

Product Description	Continuous Max Length	18-8 SS Part Number
T-Handle with Extension Rods for Tube Brushes - (6) Extensions, (1) Handle, (1) Wiper, (1) 8-32 to 5/16-27 Adapter	30	Z0009
Straight Handle and Extension Rod Kit for Cotton-Bristle Brushes - (6) Extensions, (1) Straight Handle, (1) Tube Brush Wiper Tip, (1) 8-32 Thread Adapter	40	Z0003



### Longevity

Since 1995, Accurate Manufactured Products Group (AMPG) has been a stocking manufacturer of precision components, hard-to-find fasteners and industrial products.



### Strategic Location

AMPG's 121,600 square foot facility is located in the Heart of the Midwest which gives us access to high-quality machinists/employees as well as being strategically located for fast delivery.



### Advanced Equipment

Our manufacturing facility operates 24/7, producing precision parts on state-of-the-art CNC Swiss Lathes. Parts are made from high quality materials with a superior machined finish.



### Superior Quality

Our advanced electronic Quality Control systems are employed on the manufacturing floor to catch trends before bad parts are produced.





ACCURATE  
MANUFACTURED  
PRODUCTS  
GROUP



Visit us online at [ampg.com](https://www.ampg.com) or email [sales@ampg.com](mailto:sales@ampg.com)

8090 Woodland Drive  
Indianapolis, IN 46278

p: 317.472.9000  
f: 317.472.9010

### Follow Us On Social Media



@AMPG.USA



@AMPG\_USA



@ampg\_design



@AMPG